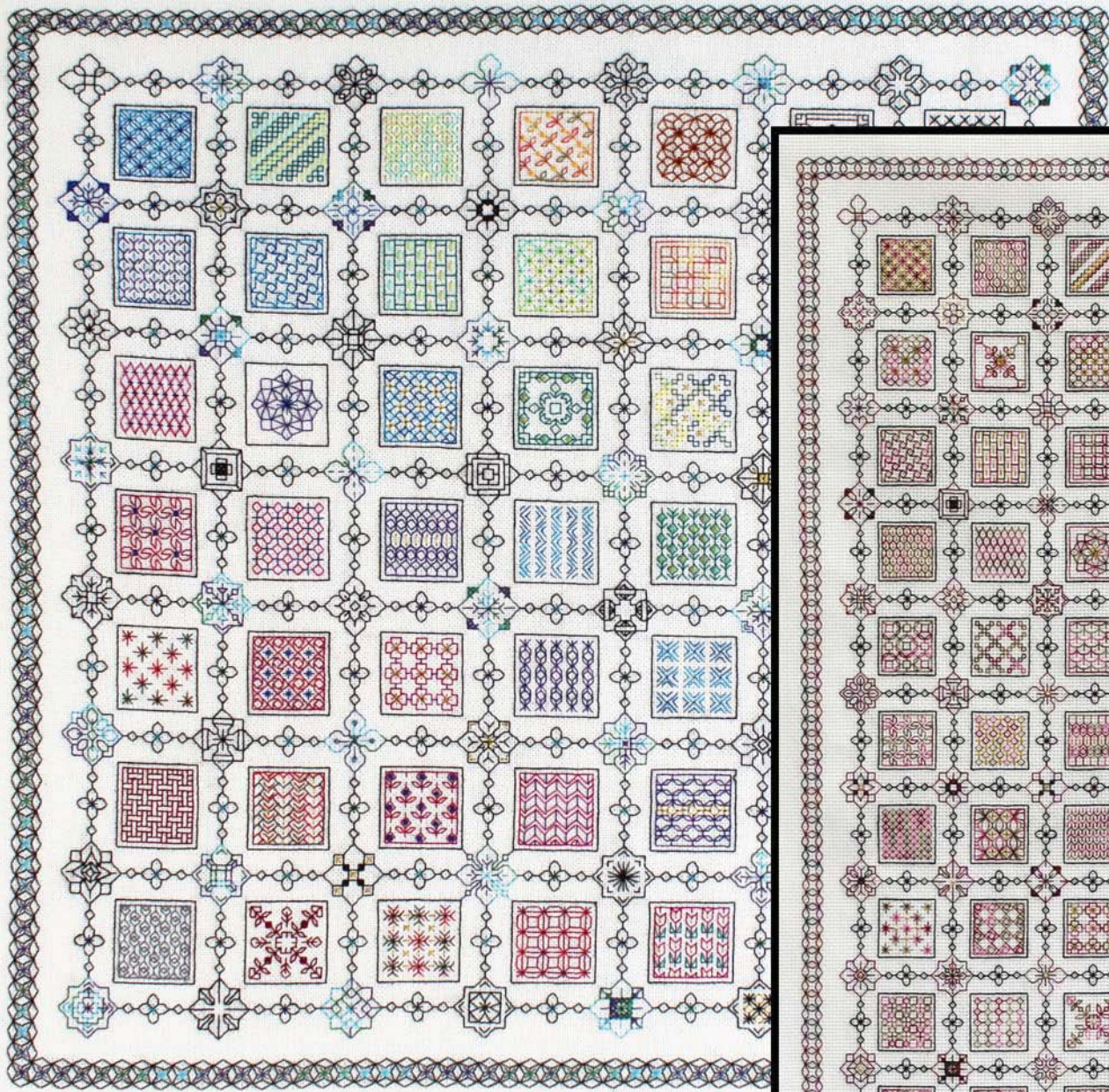


'TINY TREASURES'

Introduction



Colour, Black & Gold
12 monthly parts!

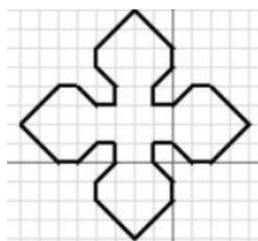
'Tiny Treasures' – Take the Challenge! Designed by Liz Almond of Blackwork Journey

Introduction



New to Blackwork?
Experienced stitcher?
Want a challenge?
Tiny Treasures
Coming soon!

Like most projects 'Tiny Treasures' started as a simple idea developed for a workshop on pattern construction. The shape reminded me of a clematis flower, and I wanted to see how many variations I could create from the one design.



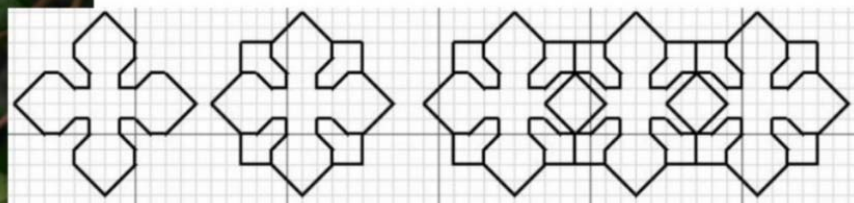
Could I link the patterns and develop them into a sampler and in what other ways could I use the ideas?

The initial idea!

After many sleepless nights and considerable time spent on the computer 'Tiny Treasures' was born.

Four charts would be added to Freebies in monthly parts, plus a series of smaller projects developed from the original design.

Two additional blackwork designs, "Colour Clematis" and "Copper Clematis" would be added to 'Charts' in due course.



Pattern building Clematis flowers

The challenge!

I know readers have developed a taste for the unusual and like a challenge, so this time I decided to approach the group project from a different angle.

In the past I have created projects such as 'Save the Stitches', 'Box of Delights', 'Pandora's Box' and 'Sublime Stitches' and readers have followed the charts and mostly worked the patterns they have been given.

This time I am going to set list of Guidelines, but the readers choosing to take the challenge have to make some choices and decisions of their own. No two pieces of embroidery should be the same. For readers who want to follow the designs as they have been worked just follow the instructions for all projects.

The main project 'Tiny Treasures' will consist of 4 different elements:

Flowers

Pattern blocks

Mini links and border, each part capable of being developed further if so desired.

There are two patterns to choose from:

a. Square design

Design area: 15.29 x 15.29 inches

Stitches: 214 x 214

Material:

Zweigart 28 count evenweave or 14 count Aida, 22 x 22 inches

If 25 count Lugana is used: 24 x 24 inches

64 Flower motifs

49 Pattern Blocks

1 border and 112 mini links

Total: 226 Tiny Treasures

b. Rectangular design suitable for framing or a runner.

The rectangular design is less complicated than the square design.

Design area: 9.86 x 26.43 inches

Stitches: 138 x 370

Material:

Zweigart 28 count evenweave or 14 count Aida, 15 x 33 inches

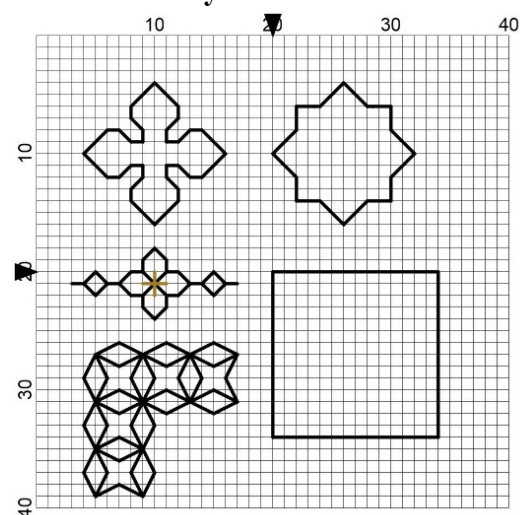
If 25 count Lugana is used: 17 x 35 inches

70 Flower motifs

52 Pattern blocks

1 border and 120 mini links

Total: 243 Tiny Treasures



Both designs will be presented in Freebies on the 1st day of the month on the Blackwork Journey website for a number of months.

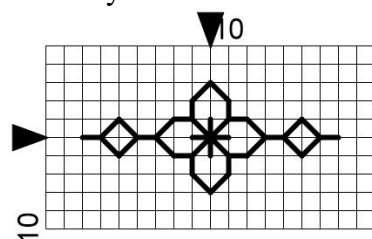
Pattern elements:

Both patterns are build up round these four basic building elements: flower motifs, pattern blocks, links and border. All the elements are put together in different combinations to create the charts and mini projects.

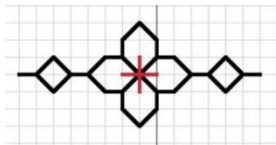
As a guide the square chart is in colour with a dark base shade, the rectangular runner is in three shades. You choose whether to add your own colours following my guidance or choose your own colours for some or all of the elements.

Guidance on colour is given for both designs, but choose where you would add colour, metallic threads and beads. Decide how each block should look and add a touch of colour. Look at both examples to see how colour has been used.

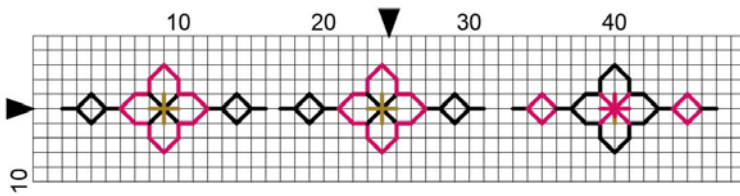
Variegated threads work well on designs which are built up of small parts BUT there must be **one** strong colour to link all the elements together. If the base colour is too pale the design will not link together correctly. The links can be coloured in different ways or left as one colour only.



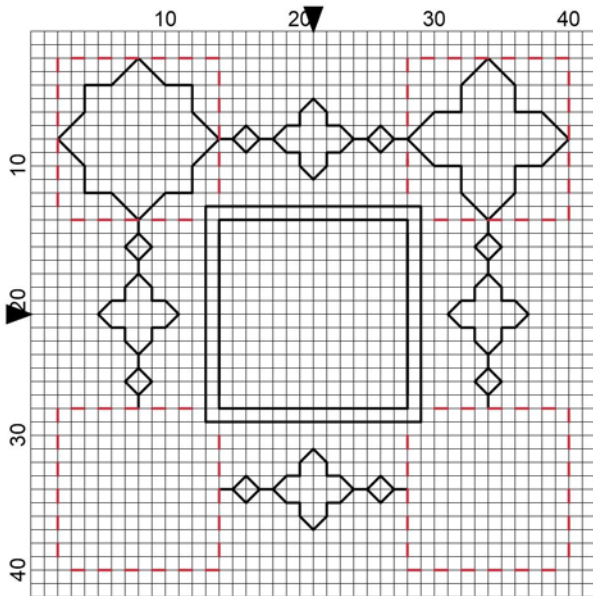
This is the link that joins the parts together. It can be worked in one colour or the flower can be a different colour.



Different ways in which colours can be used. On the Aida runner I used DMC310 black with a coloured central cross.



Ideas for links



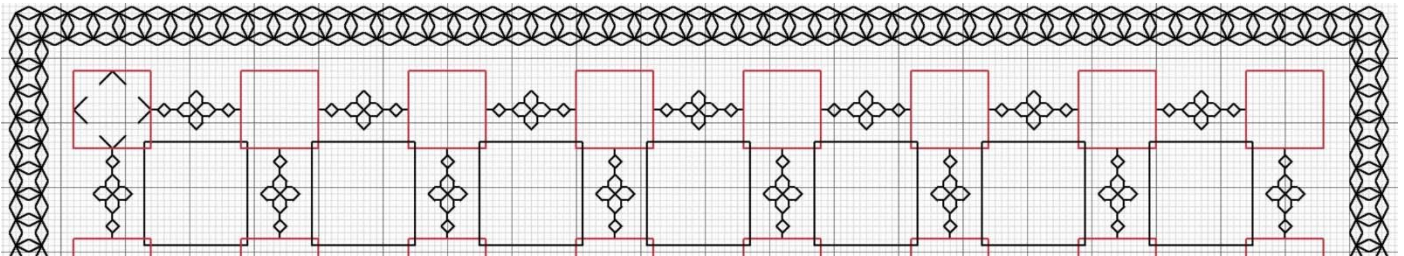
The basic block measures 2.71 x 2.71 inches, 38 x 38 stitches

This consists of 4 flowers, all different, 4 mini links and one square with an inner space where the filler patterns will be worked.

The red lines indicate the area each flower motif covers. Do **NOT** stitch the red lines but work a flower motif.

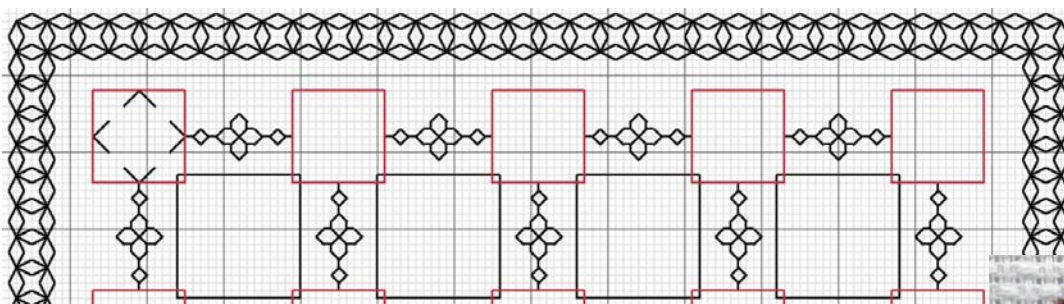
Basic block

The flower motifs can be different colours or, alternate between black DMC310 and a colour. (See Square design for guidelines) The pattern square in the centre of each block is worked in one strand of floss. Each square can be a different colour or variegated threads can be used. The runner could be worked in a similar way.



Full width of square design

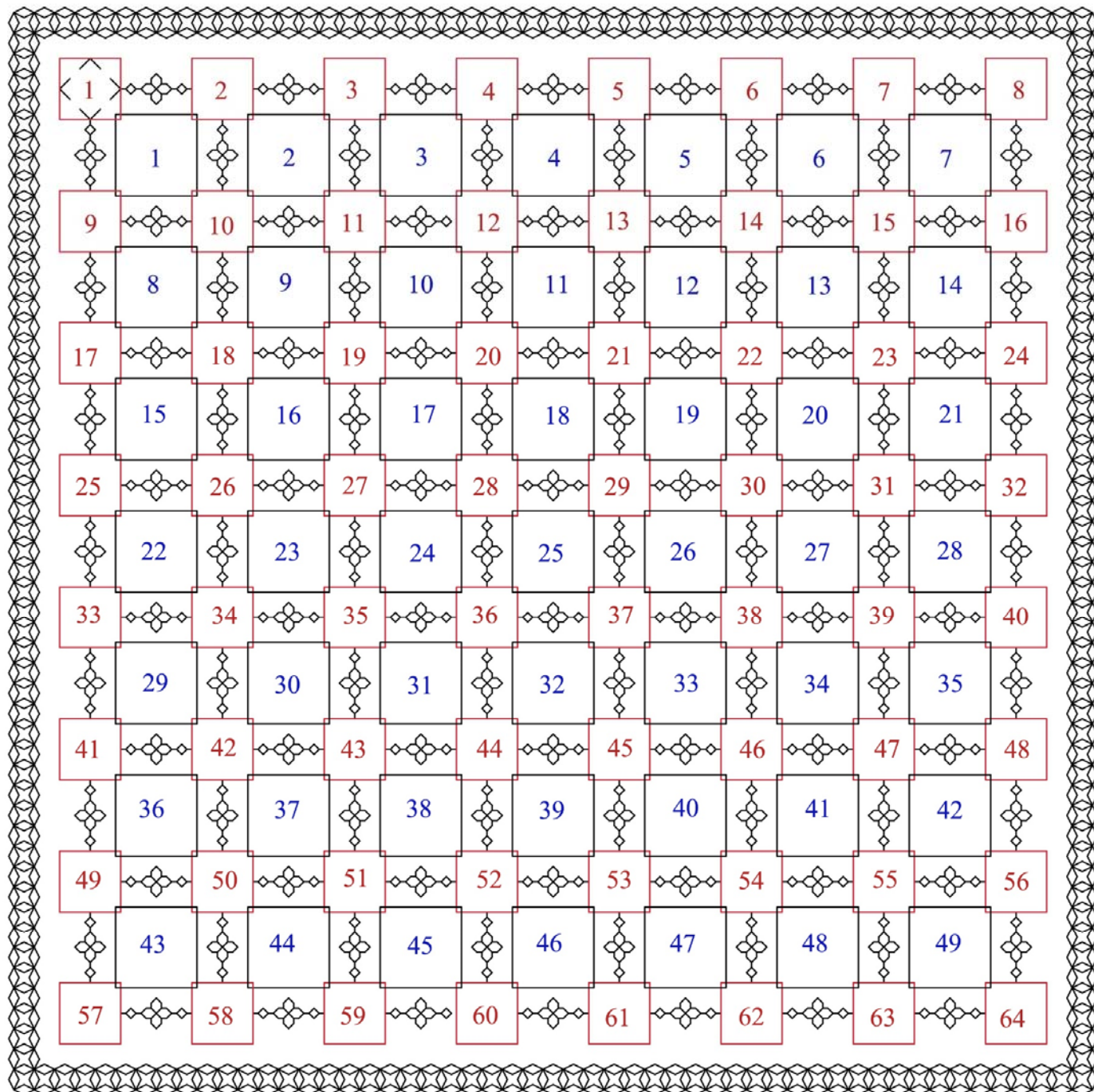
The border is worked after the design has been completed in a colour of your choice.



Full width of rectangular design

Aida border worked in DMC Coloris 4522





Square Pattern Layout

Design area: 15.29 x 15.29 inches

Material: Zweigart 28 count evenweave or 14 count Aida,
22 x 22 inches

64 Flower motifs

49 Pattern Blocks

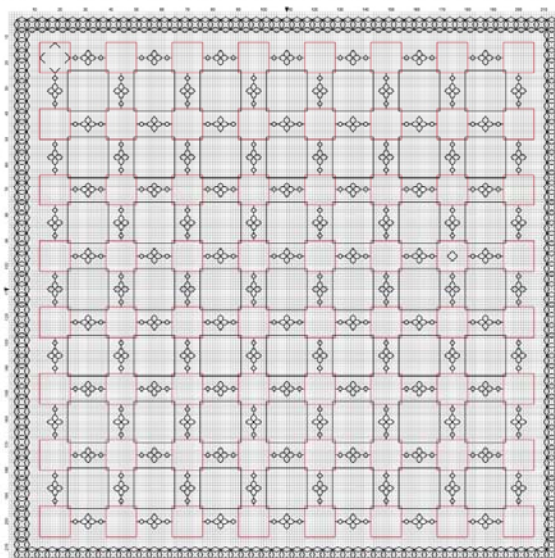
112 Mini links

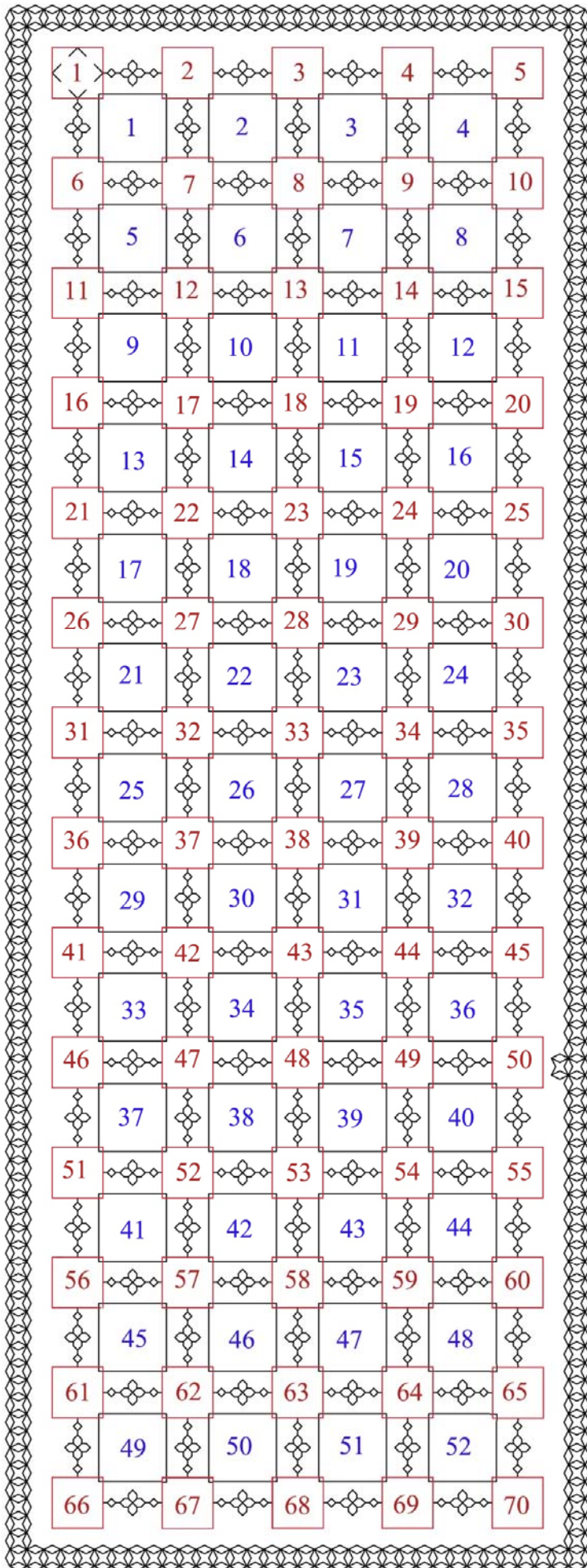
Border

= 226 Tiny Treasures

Each flower can be a different colour

Each pattern block can be a different colour





Rectangular Panel

Design area: 9.86 x 26.43 inches

Material:

Zweigart 28 count evenweave or,
14 count Aida 15 x 33 inches

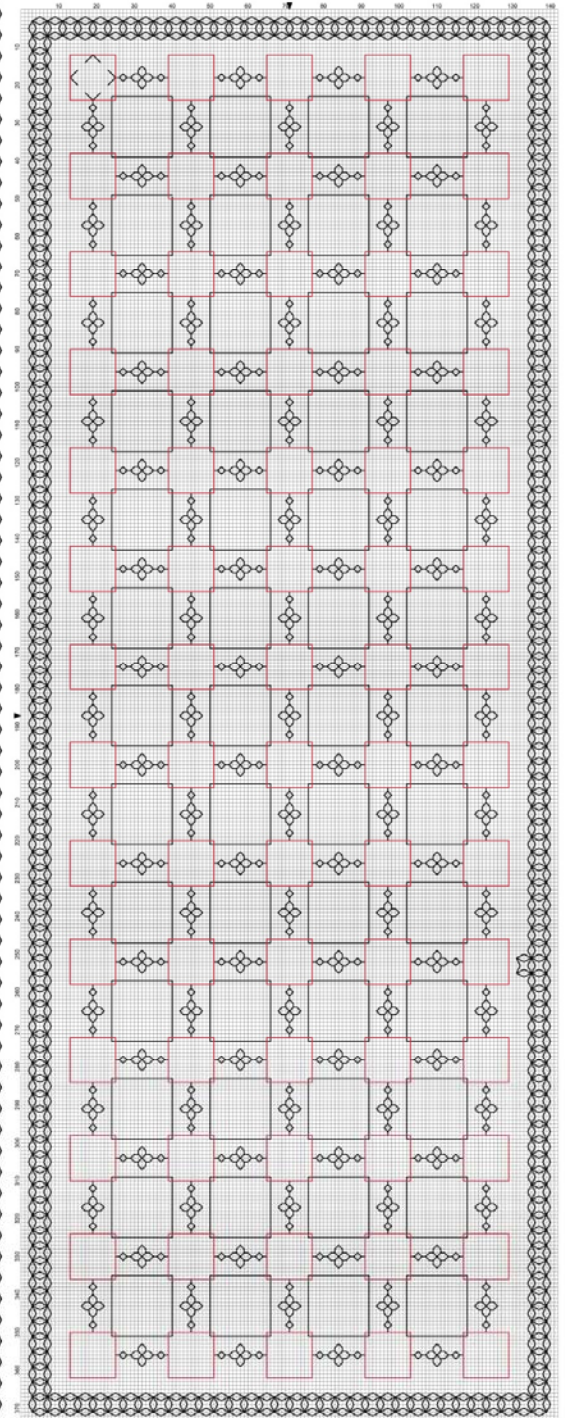
70 Flower motifs

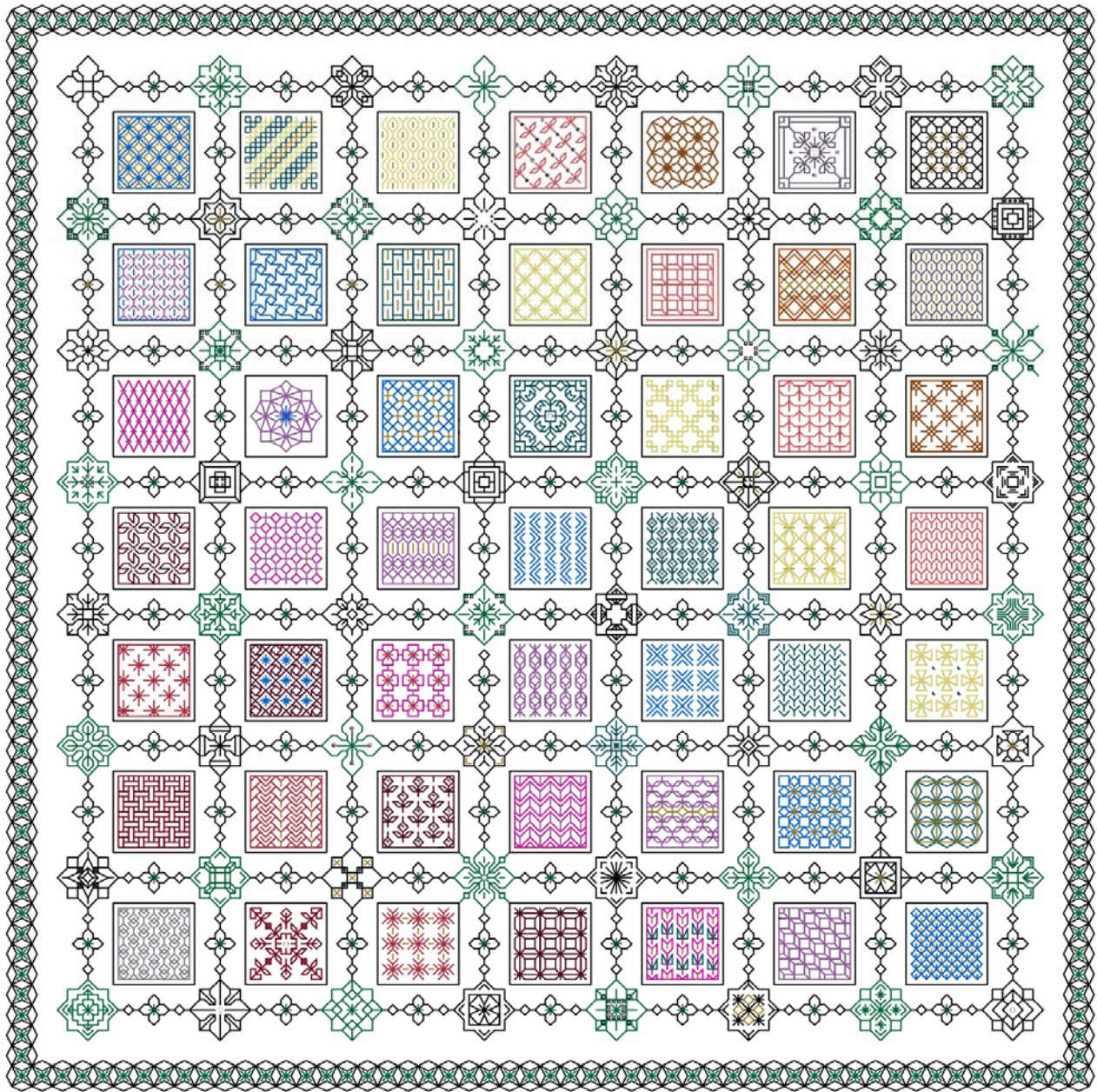
52 Pattern Blocks

120 Mini links

Border

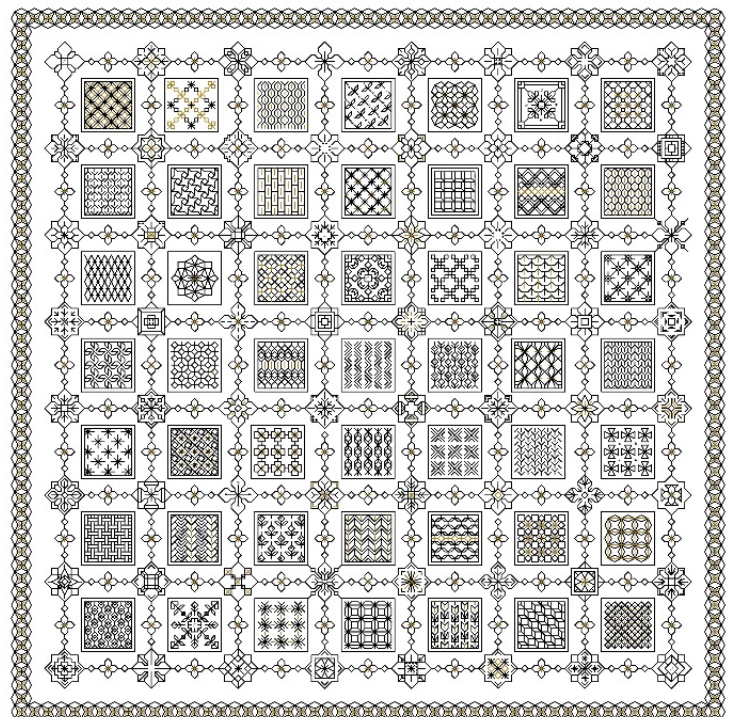
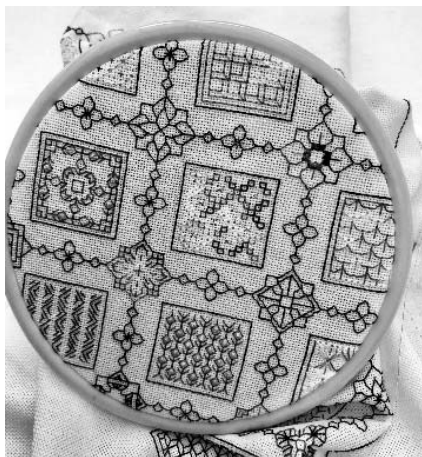
= 243 Tiny Treasures

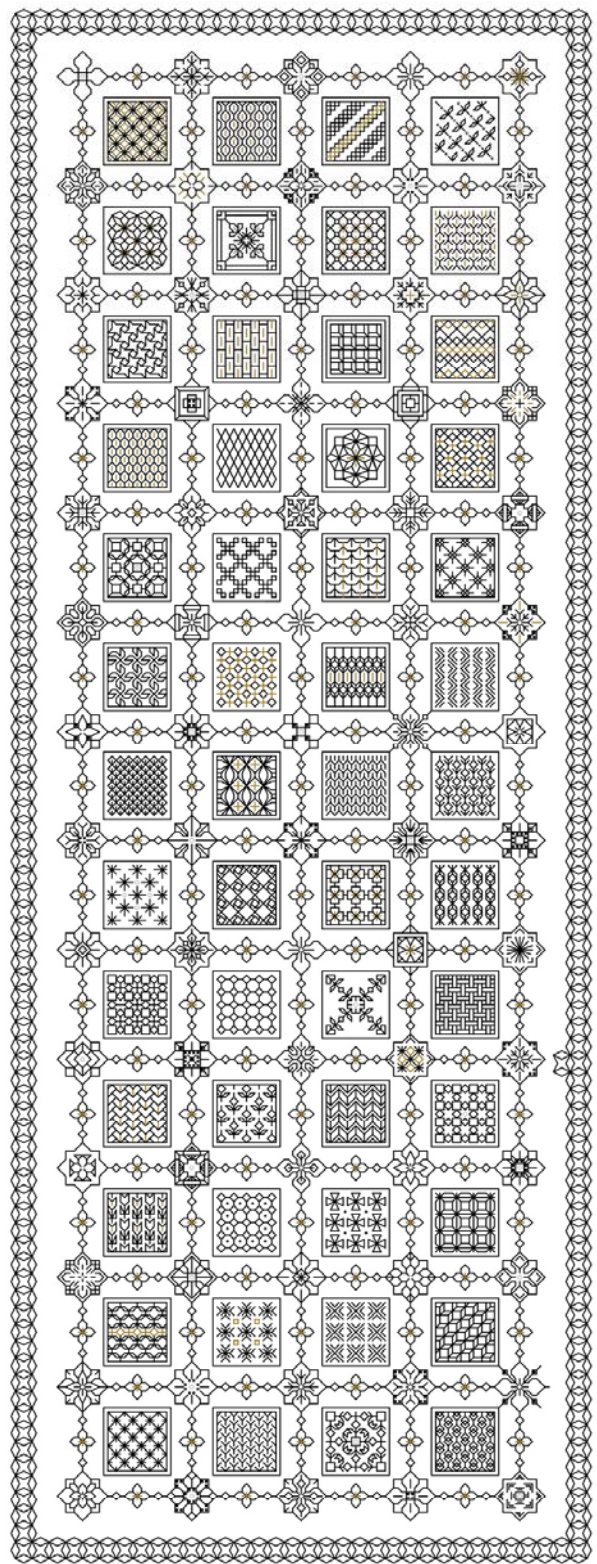
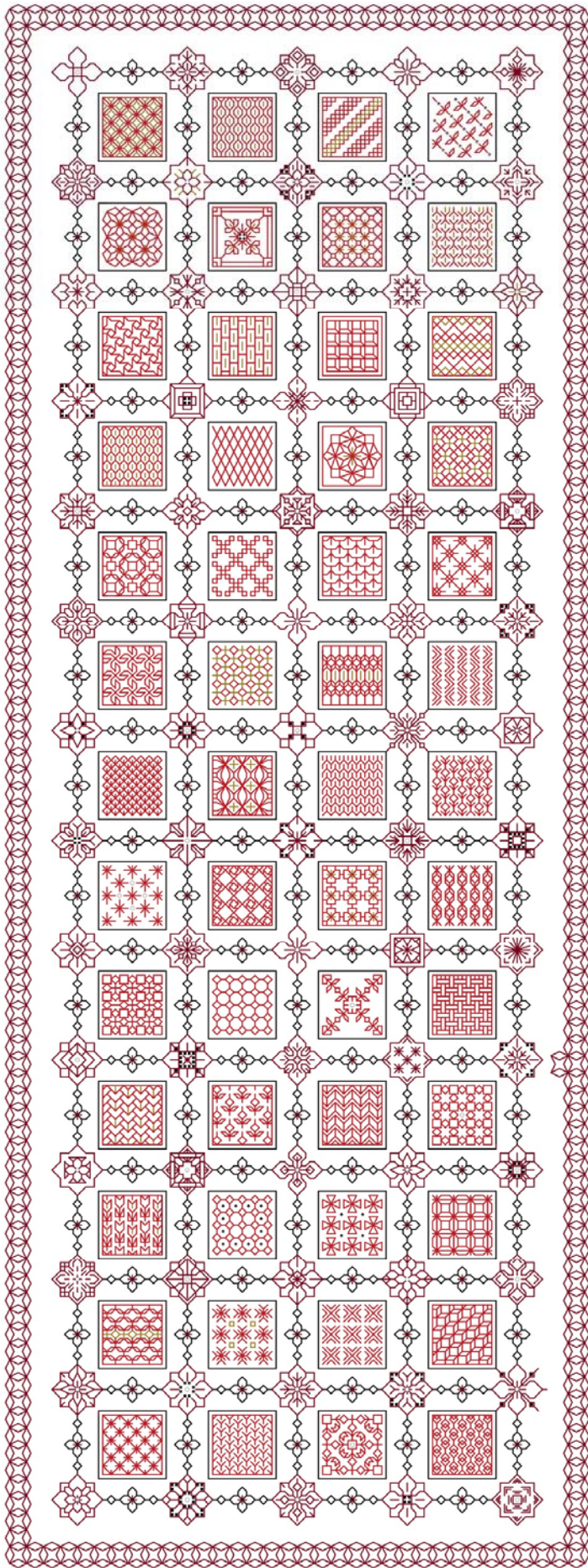




Tiny Treasures Colour Square and Tiny Treasures Black and Gold

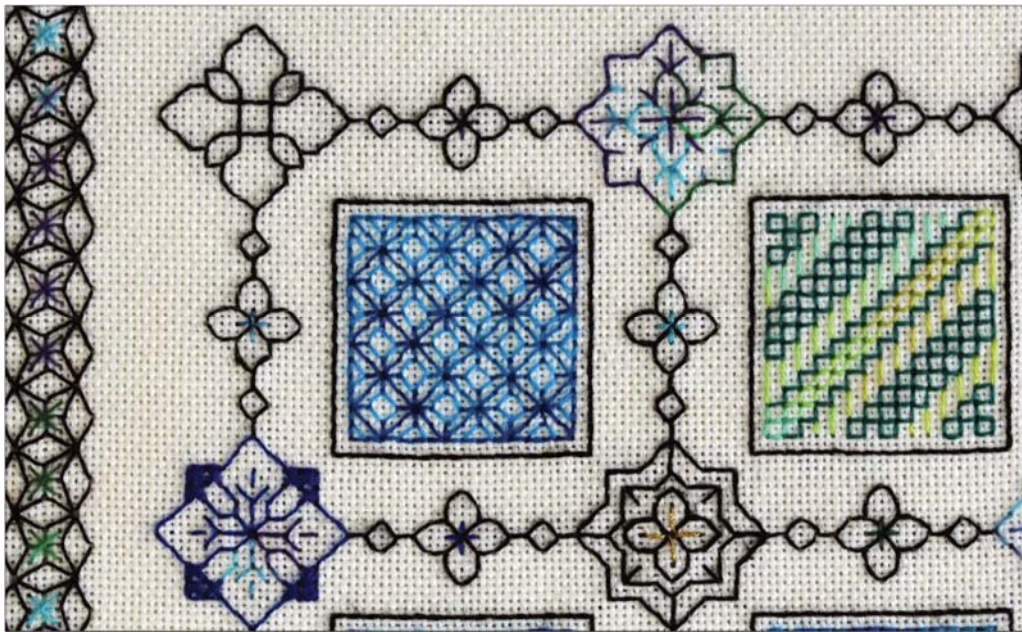
Sections from each of the two square designs will be included in “Freebies” in Blackwork Journey monthly.





Tiny Treasures Rectangular Panel
Colour or Black & Gold

One section of each design will be presented in “Freebies” in Blackwork Journey monthly.



Extract from Tiny Treasures
 Square design showing variegated thread being used in the flower motifs and the border. Crosses in the links are also worked in variegated thread.

Plan ahead where and how you will use colour and variegated threads. Thinking the project through carefully before you start will save a lot unpicking later.

Preparation:

Decide which project square or rectangular you are considering working.

Decide on the fabric to be used. The designs are suitable for both evenweave and Aida.

There are two patterns to choose from:

a. Square design

Design area: 15.29 x 15.29 inches

Stitches: 214 x 214

Material:

Zweigart 28 count evenweave or 14 count Aida, 22 x 22 inches

If 25 count Lugana is used: 24 x 24 inches

b. Rectangular design suitable for framing or a runner.

Design area: 9.86 x 26.43 inches

Stitches: 138 x 370

Material:

Zweigart 28 count evenweave or 14 count Aida, 15 x 33 inches

If 25 count Lugana is used: 17 x 35 inches

Information about suitable fabrics is listed below.

Choosing fabric – making the right choice for you:

The patterns have been designed to work on either Zweigart Aida or evenweave, and are suitable for a novice or a more experienced embroiderer who wishes to make her own decisions about the colours and layout that she chooses.

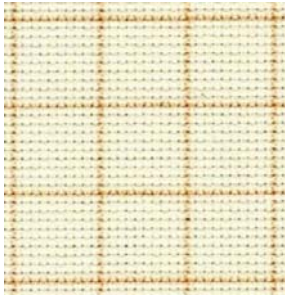
Aida Fabrics:

Recommended brand: Zweigart

Zweigart Aida ranges from 3.5-count up to 22-count.

Count refers to the number of threads per inch. Low count fabrics are great for children and beginners, 14-count is the most commonly used for cross stitch and counted thread work and higher counts are great for more experienced needlewomen, or those wanting a finer result.

I would suggest a 14 count Aida. There are some split stitches in the designs and 14 count Aida is easy to see and work with and the blackwork patterns show up well.



If you have difficulty counting there is a solution:

14 Count Aida - Easy Count 100% Cotton, Zweigart Fabric. Easy count fabric reduces counting time and helps make stitching much quicker and easier. The grid lines correspond to the grid lines on your stitching chart, and disappear when washed.

Evenweave fabrics:

Recommended brand: Zweigart

If you are investing time and money on your project cheaper threads and fabrics may let you down!

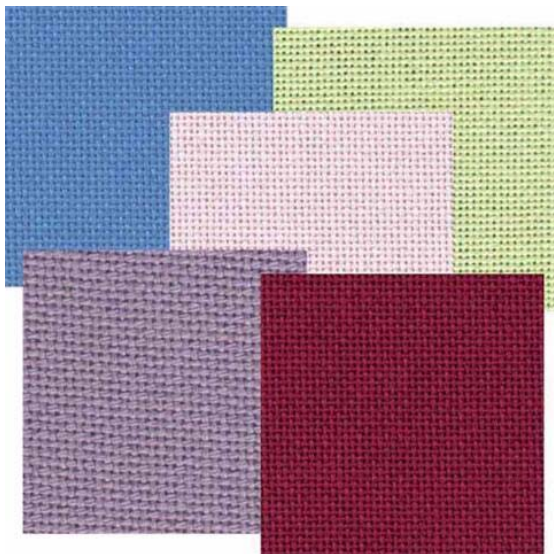
There are a number of different evenweaves you can choose from:

Zweigart cotton evenweave is used for cross stitch, embroidery and other needlecraft. It's easy to count as you stitch while allowing a good amount of detail.

Choose a fabric you are comfortable working with. If you are using evenweave for the first time consider using Zweigart 25 count Lugana.

25 Count Lugana

52% Cotton & 48% Rayon, Zweigart Fabric. An elegant fabric for table linens, samplers, pillows and other decorative accessories. Lugana is perfect for cross stitch, drawn thread work and other counted thread techniques. It comes in a wide range of colours. Antique white is easier to work on than white because of the glare.



The fabric handles well with minimum creasing and the holes are easy to see. The threads are smooth unlike linen.



Zweigart 27 count Linda

100% Cotton, Zweigart Fabric. This fabric is an excellent alternative to 28 count linen for the needlewoman who prefers an easy count quality fabric. A light weight fabric with an easy care finish, perfect for clothing because of its close weave and draping effect. Also excellent for table linens and samplers.



Zweigart 28 count Brittany

52% Cotton & 48% Rayon, Zweigart Fabric. Brittney is a soft easy care fabric. For cross stitch, it is equivalent to 14 count Aida when worked over two threads and at the same time offers the stitcher a more even surface.

Note: Using space dyed fabrics can detract from an intricate sampler. Choose carefully! If using fabric other than Zweigart please check the fabric count, not all fabric is the count that it says it is!

28 Count Cashel Linen

100% Linen, Zweigart Fabric. Cashel is suitable for all counted embroidery techniques including Hardanger. The rich colour range offers the needlewoman a wide variety of colours which are sure to complement any design. Linen is more expensive and difficult to handle. I would not recommend linen to a beginner. A more experienced embroiderer will not find it difficult to work with but the slub and texture may not give the desired effect.

Note: On evenweave fabric cross stitch is worked in **TWO** strands over **two** threads, back stitch is worked in **ONE** strand over **two** threads unless indicated in the pattern.

On Aida fabric cross stitch is worked in **TWO** strands over one block, back stitch is worked in **ONE** strand over one block unless indicated in the pattern.

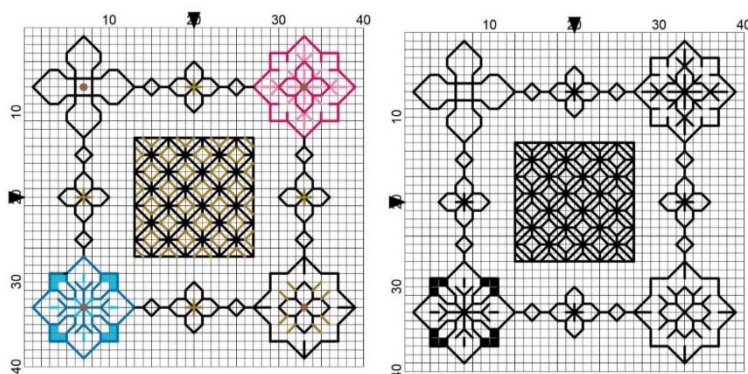
Threads:



There are many different varieties of clematis

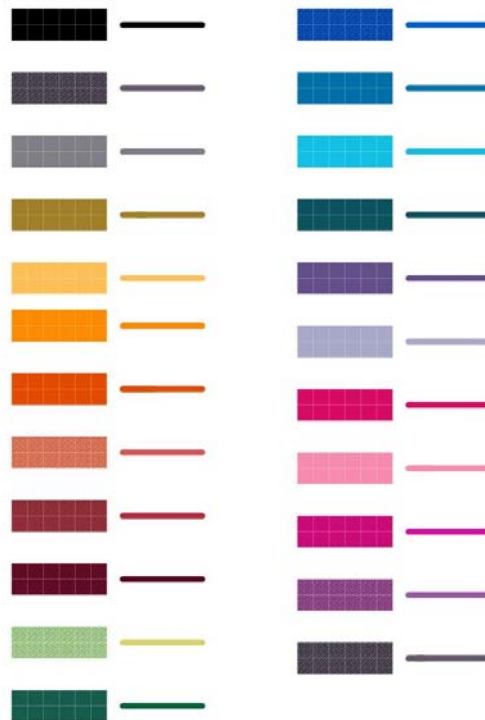
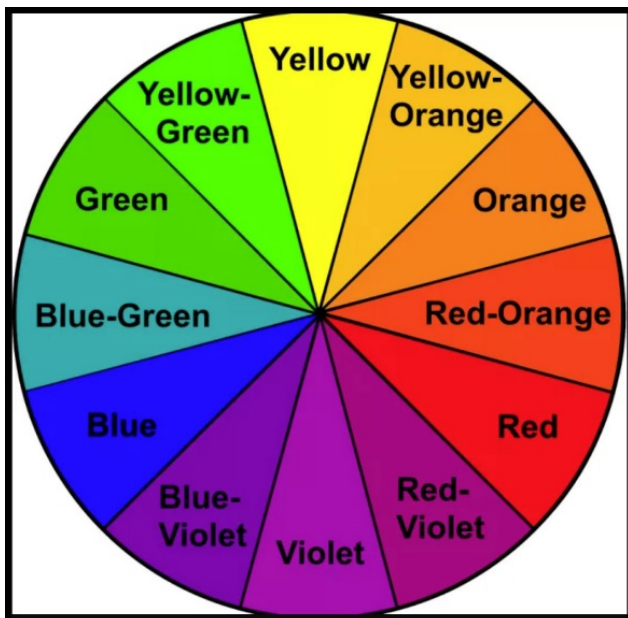
Look at the flowers to see the wide range of colours within them to help you make your thread choices.

The flower patterns are joined together into blocks by the links. Black and colour alternate on the square chart and three shades are used on the rectangular chart. If you decide to work the square chart in one colour only, it will look very flat. Add touches of colour to 'lift' the design. Metallic thread adds sparkle. Beads are added after the embroidery has been completed. I used Mill Hill gold beads but the choice is yours.



Collect together all your scraps of threads left over from other projects. Sort them into different colours that you like working with. Work on the idea that at least half of the flower motifs will be in mixed colours or, every flower can be a different colour. Colour can also be used the pattern blocks.

All the elements combine in the block



Working with colour

Use the Colour Wheel as a guide. Lay threads out and group them. Use colours you enjoy working with but do not be afraid to experiment.



For the Square project a mixture of DMC threads and Threadworx colours was used. DMC 310 and Threadworx 1138 was used for the border and alternating flower motifs to link the elements together.

Tiny Treasures Square Design - Suggested threads

Legend:							
■	[2]	DMC-310 ANC-403 COL- DLE- TWX- black	(1.0 skeins)				
■	[2]	DMC-742 ANC-303 COL- DLE- TWX- tangerine - lt	(0.1 skeins)				
Call Outs:							
■	[2]	DLE-E3852 Dark Gold	(0 stitches) DMC Light Effects				
■	[2]	TWX-011383 Mediterranean	(0 stitches) Threadworx Cotton Floss				
■	[2]	DMV-4050 Roaming Pastures	(0 stitches) DMC Variations				
■	[2]	TWX-01138 Mosaic	(0 stitches) Threadworx Cotton Floss				
■	[2]	TWX-011213 Wrought Iron	(0 stitches) Threadworx Cotton Floss				
Backstitch Lines:							
—	DMC-310	black	(1.0 skeins)	—	TWX-01138	Mosaic	(0.5 skeins)
—	DMC-995	electric blue - dk	(0.1 skeins)	—	DMC-400	mahogany - dk	(0.1 skeins)
—	DMC-996	electric blue - md	(0.1 skeins)	—	DMC-946	burnt orange - md	(0.1 skeins)
—	DMC-333	blue violet - vy dk	(0.1 skeins)	—	DMC-814	garnet - dk	(0.1 skeins)
—	DMC-340	blue violet - md	(0.1 skeins)	—	COL-4510	Maple	(0.1 skeins)
—	DMC-600	cranberry - vy dk	(0.1 skeins)	—	TWX-010061	Jillians Sugar Plum	(0.1 skeins)
—	DMC-604	cranberry - lt	(0.1 skeins)	—	TWX-01152	Very Berry	(0.2 skeins)
—	DLE-E3852	Dark Gold	(0.1 skeins)	—	DMV-4210	Radiant Ruby	(0.1 skeins)
—	DMC-740	tangerine	(0.1 skeins)	—	COL-4519	Jingle Bells	(0.1 skeins)
—	TWX-011383	Mediterranean	(0.2 skeins)	—	TWX-011213	Wrought Iron	(0.1 skeins)
—	DMC-3808	turquoise - ul vy dk	(0.1 skeins)	—	DMC-414	steel gray - dk	(0.1 skeins)
—	DMV-4050	Roaming Pastures	(0.1 skeins)				
French Knots:							
●	DMC-742	tangerine - lt	(12 French knots)	●	TWX-01138	Mosaic	(8 French knots)
●	TWX-011383	Mediterranean	(22 French knots)	●	TWX-011213	Wrought Iron	(4 French knots)
●	DMV-4050	Roaming Pastures	(21 French knots)				
Beads:							
●	MHG-557	Mill Hill Glass Beads-Gold	(6 beads)				

The abbreviations on the key:

DMC – Stranded floss

DMV – DMC Variations

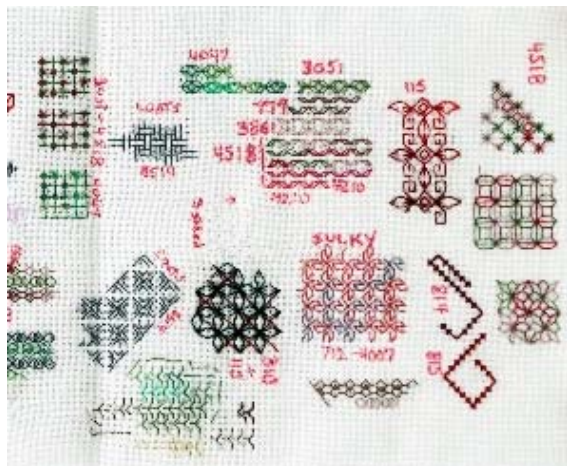
TWX – Threadworx

DLE – DMC Light Effects (Metallic)

COL – DMC Coloris

Note: “Call outs” is the name that the design software calls cross stitch.

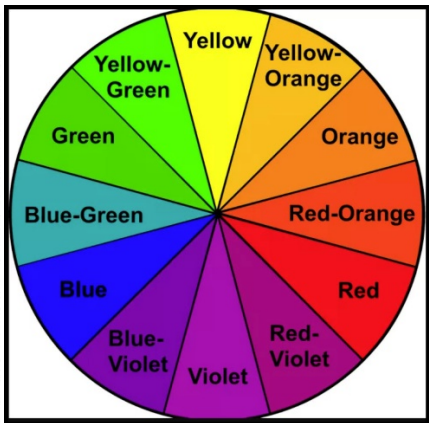
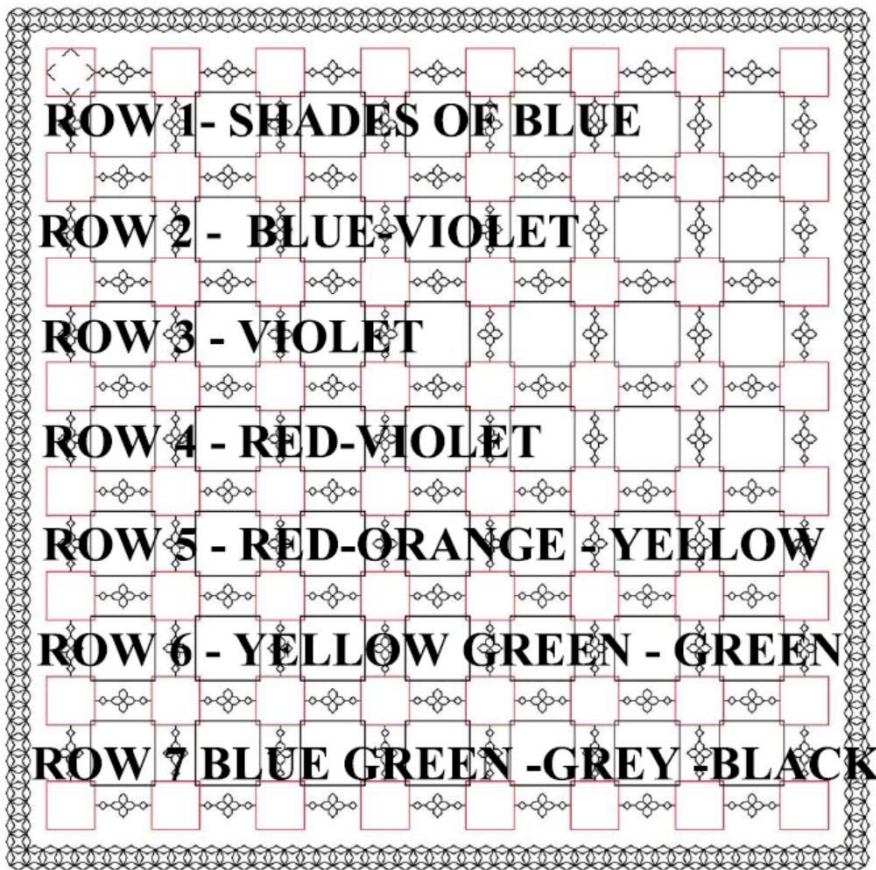
Look at the colours you already have and find similar shades or create your own colour scheme. Add variegated and metallic threads. Beads are optional and would not be added until the embroidery has been completed.



French knots are indicated on the key. Colonial knots or beads may be used in place of French knots.

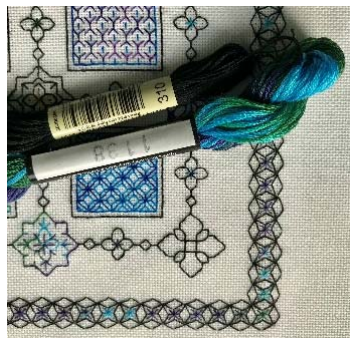
Lay the threads out in groups and leave them for a few days. Take a fresh look and add or remove any that you are not happy with. Try samples out on your doodle cloth to see how they work.

Extract from Maureen's doodle cloth showing stitches worked and threads used - a very useful guide!



**Tiny Treasures Square
Alternative colour layouts:**

1. Work pattern blocks in shades of one colour.
2. Work every pattern block in a different colour.
3. Work the flower motifs in different colours and pattern blocks in black.
4. Work the bands of colour diagonally as shown in the embroidery.
5. Work the flower motifs and links in dark shades and the pattern blocks in colour.
6. Consider using variegated threads in the design.



The embroidery has been worked in diagonal bands using a variety of solid and variegated threads. DMC 310 Black and Threadworx 1138 were used for the border and alternating flower motifs to add contrast and link the design together.

Tiny Treasures Rectangular Design - Threads:

The design can be worked in colours of your choice. The sample was worked in **DMC 310 Black**, one skein and **DMC Coloris 4522**, two skeins which was represented on the chart by DMC 814 and **DMC Coloris 4504**, two skeins which was represented on the chart by DMC 817 Coral red for clarity. DMC Light Effects E3852, one skein, was used for the metallic thread.

Legend:

■ [2] DMC-814 ANC-45 DLE- garnet - dk (0.9 skeins) ■ [2] DMC-817 ANC-13 DLE- coral red - vy dk (0.6 skeins)

Call Outs:

■ [2] DLE-E3852 Dark Gold (0 stitches) DMC Light Effects

Backstitch Lines:

— MHG-557 Gold (0.1 skeins)

— DLE-E3852 Dark Gold (0.1 skeins)

— DMC-814 garnet - dk (0.9 skeins)

— DMC-817 coral red - vy dk (0.6 skeins)

— DMC-310 black (0.4 skeins)

French Knots:

● DMC-817 coral red - vy dk (13 French knots)

Beads:

● MHG-557 Mill Hill Glass Beads-Gold (57 beads)

DMC Coloris4522 is represented on the chart by DMC 814 garnet
DMC Coloris4504 is represented on the chart by DMC 817 Coral red

Note: "Call outs" are the name that the software uses for cross stitch.

Coloris	DMC Solids
4500	3052 - 3013 - 818 - 3354
4501	598 - 772 - Ecu - 3706
4502	3348 - 3841 - 603 - 601
4503	3834 - 3835 - 3819 - 3743
4504	3781 - 3032 - 3803 - 316
4505	3051 - 3053 - 3041 - 3042
4506	472 - 926 - 988 - 3760
4507	602 - 3808 - 959 - 798
4508	734 - 3078 - 3024 - 3771
4509	645 - 223 - 166 - 3836
4510	3819 - 3705 - 640 - 921
4511	783 - 349 - 938 - 3051
4512	318 - 798 - 349 - 336
4513	B5200 - 413 - 814 - 318
4514	3809 - 317 - 153 - 3834
4515	839 - 840 - 932 - 930
4516	839 - 632 - 712 - 498
4517	350 - 502 - 816 - 891
4518	779 - 3861 - 3051 - 815
4519	838 - 500 - 498 - 321
4520	321 - Blanc - 369 - 911
4521	3023 - 934 - 834 - 3031
4522	838 - 3834 - 3799 - 632
4523	3840 - 210 - 451 - 613

DMC Solid colours can be used in conjunction with the Coloris variegated threads.

Avoid pale colours on the design. One strand of floss does not make an impact if it is too pale. Test by laying one strand of floss on the fabric first. If it can be seen clearly then it can be used.



Rectangular embroidery

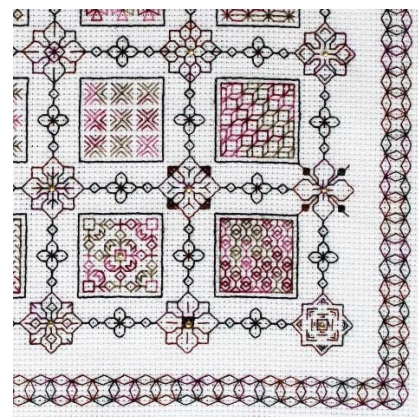
Tiny Treasures Rectangular Design

1. Work pattern blocks across the width of the design in different shades of one colour.
2. Work every pattern block in a different colour.
3. Work the flower motifs in different colours.
4. Use one dark and two variegated colours.
5. Work the pattern blocks in dark and the flower motifs and links in colour.
6. Work colours diagonally as bands.

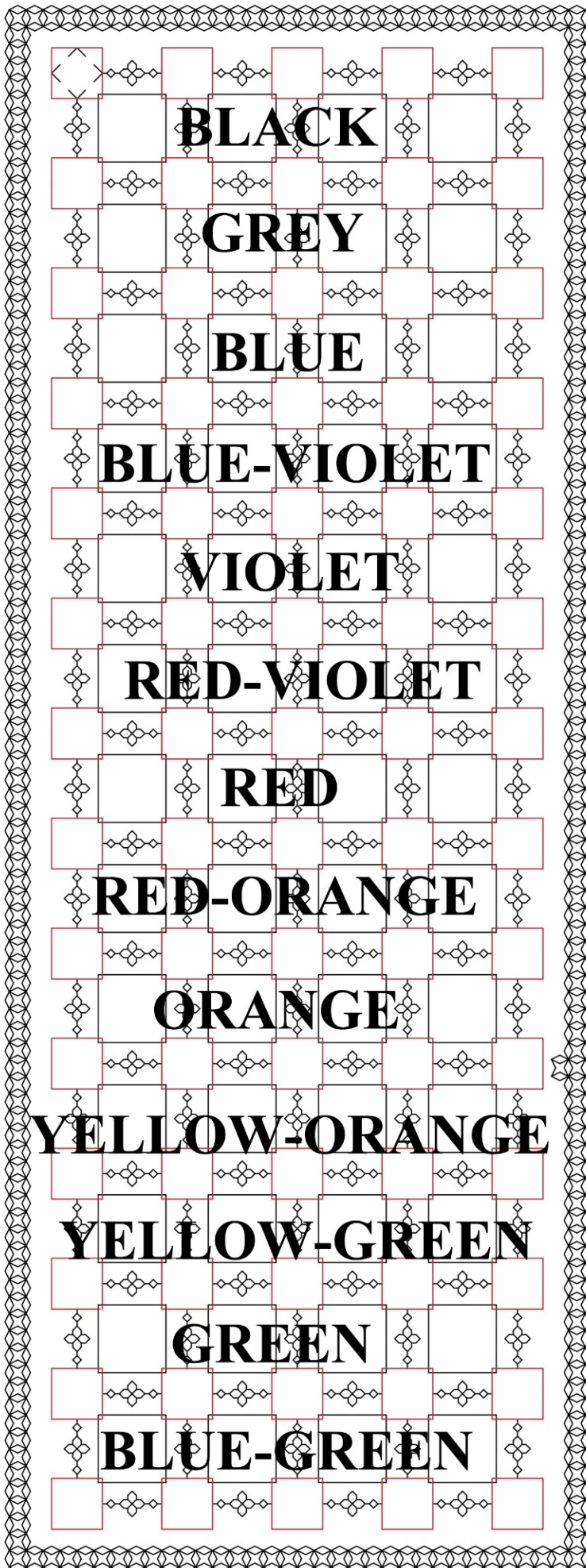
Use the Colour wheel as a guide and do not be afraid to experiment with colour.



The Aida rectangular design was worked in two shades of DMC Coloris and DMC 310 black. The metallic gold was DMC Diamant.



DMC Coloris is a simple way of using colour in a large design!





Coloris



Ancolie des jardins 4500



Fleurs des champs 4501



Camélia 4502



Glycine 4503



Hortensia 4504



Bruyère 4505



Primavera 4506



Bougainvillier 4507



Campagne givrée 4508



Côte de granit 4509



Erable 4510



Été indien 4511



States 4512



Londres 4513



Venise 4514



Paris 4515



Forêt noire 4516



Lutins 4517



Cottage 4518



Jingle bells 4519



Conte de Noël 4520



Grands espaces 4521



Nuit canadienne 4522



Vent du nord 4523

The flower patterns are joined together into blocks by the links. Black and colour alternate on the square chart and three shades are used on the rectangular chart. If you decide to work the square chart in one colour only, it will look very flat. Add touches of colour to 'lift' the design. Metallic thread adds sparkle. Beads are added after the embroidery has been completed. I used Mill Hill gold beads but the choice is yours.

Collect together all your scraps of threads left over from other projects. Sort them into different colours that you like working with. Work on the idea that at least half of the flower motifs will be in mixed colours or, every flower can be a different colour. Colour can also be used the pattern blocks.

Choose one darker tone for the plain colour flowers and for the links. This can be a plain colour such as DMC 310 black, dark navy, garnet or a variegated thread from Threadworx or DMC Coloris. It must be dark enough not to detract from other colours used for the flowers.

DMC Coloris Floss

100% cotton six-strand embroidery floss. Four complementary shades in one thread
Colours change every 5 cm. Comprised of six size 25 easily separated strands
100% colourfast, fade resistant 8.7yd/8 m
DMC floss and Threadworx work well together



Threadworx Variegated threads:

Hand over dyed six strand floss. Long staple 100% Egyptian Giza cotton 253 colour 5 and 10 yard skeins
<https://threadworx.com>

Test the colours you have chosen before you use them by taking one strand of the floss and laying it on white material. If the colour does not stand out then discard it as it will not be strong enough to make an impact.

Metallic threads can be used to add sparkle. Use short lengths of thread to reduce fraying and a larger tapestry needle than usual so the thread passes easily through the fabric.

DMC Diamant Metallic thread is a smooth single strand metallic thread that glides through fabrics including cotton, linen, satin, silk to gives a precise and even coverage. Soft and tangle-free Diamant keeps its twist during stitching and is ideal for traditional embroidery and cross stitch. One strand is equivalent to two strands of DMC stranded cotton.



Precious Metal Effects

E168 Silver	
E301 Copper	
E317 Titanium	
E677 White Gold	
E3821 Light Gold	
E3852 Dark Gold	

DMC Precious metal light effects, DMC Diamant or Rainbow Gallery Petite Treasure braids are my preferred metallic threads.

Rainbow Gallery Petite Treasure Braid

65 Rayon, 35% Metalized Polyester
25 Yard Cards
Hand Washable, Test First
Made in Japan & USA

A 3-ply braided metallic, Treasure Braid Petite is for very fine work or to combine with other threads. Light coverage for 18 count but works great for Cross Stitch too. Use TWO strands for Tiny Treasures.



Choose colours that reflect your taste!

Beads:

Seed beads are small beads that are almost round in shape. Mill Hill Seed Beads range in size 15/0 (Mill Hill Petite Glass Beads) to size 11/0 (Mill Hill Glass Seed Beads, Mill Hill Antique Glass Seed Beads, Mill Hill Frosted Glass Seed Beads and Mill Hill Crayon Beads).

Bead sizes: Beads are measured across the widest point on the outside of the bead

Mill Hill Glass Seed Beads are: 2.5mm

Beads are optional. If they are used, add them after the embroidery has been completed. They are indicated on the chart but use your own discretion.

Equipment needed:

Tapestry needle No 24
Beading needle
Frame or small embroidery ring
Tacking thread, pale
Light and lens if required

Plastic flexi hoops 6 or 8 inch are ideal if you have arthritis and cannot tighten screws.

**Stitches used:**

Back stitch, one strand of floss
Cross stitch two strands of floss
Evenweave: stitches are worked over 2 threads unless the pattern indicates otherwise.
Cross stitch: stitches are worked over one block unless the pattern indicates otherwise.

Preparing the fabric:

Because of the complexity of the chart and the size of the fabric, prepare the fabric carefully before starting to stitch. Oversew the raw edges or turn a small hem to prevent the fabric fraying.

Fold the fabric into quarters and find the centre. Finger press and then tack from the centre vertically and horizontally from the centre point following the instructions for the chosen shape. Use a pale thread to avoid leaving a residue in the fabric.

Tack the shape outline carefully to place the pattern in the correct position of the fabric and to leave sufficient material round the edges for working, mounting and framing.

The design will be worked from the TOP downwards. A section of the pattern will be provided each month. Do not work the border until the central pattern has been completed.

Square design: count left 107 stitches from the centre, right 107 stitches from the centre, upwards 107 stitches from the centre, down 107 stitches from the centre. **Total 214 stitches**

Rectangular design: count 69 stitches left, right 69 stitched from the centre, upwards 185 stitches from the centre, down 185 stitches from the centre **Total: 370 stitches**

Tack the outline carefully to place the pattern in the correct position of the fabric and to leave material round the edges for working, mounting and framing.

The design will be worked from the **TOP** downwards. A section of all the patterns will be provided each month

Working with a large piece of fabric:

If the fabric is not mounted in a frame use a small embroidery ring and remove the ring after each session. If the fabric is not mounted in a frame cover a cardboard kitchen roll with acid free tissue paper or material and roll the embroidery round the card after each session to reduce creasing.

I hope you enjoy reading the information and working the design.

If you have any queries please contact:
lizalmond@blackworkjourney.co.uk

Happy stitching,

Liz